



## INSTRUCTIONS FOR TRANSPORTATION

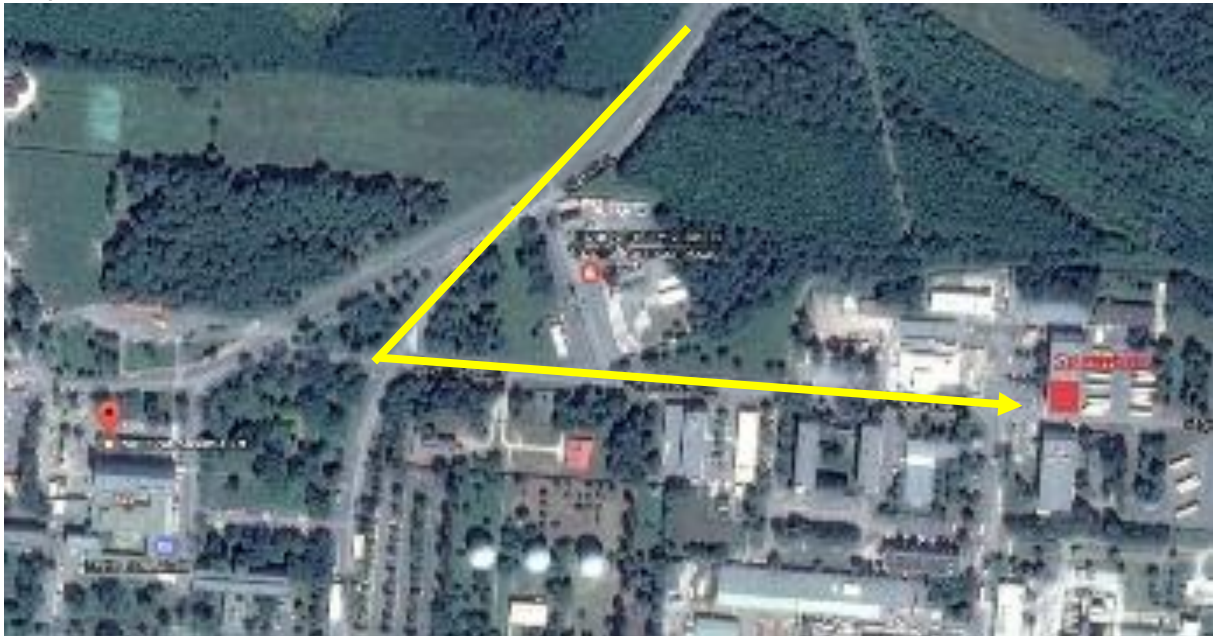
### FCA DELIVERIES

Let us inform you about the availability, opening hours and truck-loading data (size and weight) of MOL Petrochemicals Plc.'s vehicle reception (SPEDITION). In the following paragraphs, in terms of transport with FCA parity (deliveries organised by the customer), shipping companies can find the most important information about what to do, the notification process, and the verification of the necessary permits.

#### ADDRESS OF SPEDITION:

MOL Petrochemicals Private Company Limited by share: SPEDITION  
H-3581, Tiszaújváros, TVK-Industrial Site, HUNGARY  
GPS Coordinates: 47.918869, 21.038255

Map:



#### OPENING HOURS OF SPEDITION:

Monday – Friday: 06:00 – 21:00

#### OPENING HOURS OF WAREHOUSES (from 5th of September) :

- PP3, LDPE, HDPE1: **08:00 – 16:00 (in bags)**  
**06:00 – 22:00 (in silo)**

Orders with customs clearance: the driver must arrive by **14:00** at the latest

- PP4, HDPE2: **08:00 – 16:00**

Orders with customs clearance: the driver must arrive by **14:00** at the latest

The opening hours of the Spedition will not change, however, trucks will be allowed to enter the Finished Goods Warehouses from 7:30 am until 3:00 pm, and until 2:00 pm if

customs clearance is required. Exceptions will be made for silo trucks of HDPE1, LDPE2 and PP3.

### DIMENSION OF THE ORDER

- Total weight: net weight is 23,375 tonnes → gross weight is 23,936 tonnes
  - Exceptions:
    - RO; BG; TR; GR: net 22 tonnes → gross 22,528 tonnes
    - UA; BY; RU: net 20,625 tonnes → gross 21,012 tonnes
- Parameters of the pallet:
  - size of pallet: 1100x1300mm
  - height of pallet: between 1800-2000mm
- Total weight of packaging material: 8 kg that includes:
  - weight of empty bags (55 bags on 1 pallet): 6 kg/pallet
  - stretch wrapping weight: 2kg/pallet
  - wood pallet weight: 25 kg/pallet

### INFORMATION ON FCA DELIVERIES:

#### AVISO

Before the arrival of the truck, transportation companies have to send the plate numbers of the vehicle via e-mail to their contact. Without this, the driver won't get approval to pick up the shipment. The plate numbers are recorded in Time Slot Management operated by MPC. The deadline for receiving the aviso with plate numbers is **14:00 on the workday before the loading date**. If MPC receives the aviso after the deadline, the plate numbers will be recorded on the day of loading by 08:00, and loading will only start after this time. The driver must know the MPC delivery number for the loading, after the advice of dispatch's arrival (aviso) MPC will send this number by e-mail.

If the aviso contains loading in a silo, if necessary MPC will provide a time slot, the silo truck must have arrived by the given time slot.

#### MPC

At the SPEDITION of MOL Petrochemical Ltd. drivers are provided with maps for proper orientation on the industrial site, and we kindly ask you to leave these maps at the Security Service Provider when leaving MPC.

Let us inform you about the Hungarian regulations regarding the place of loading: According to Government Decree No. 116/2014 published in the Hungarian Official Gazette on 3 April 2014, in each case, MOL Petrochemicals will check necessary documents and permissions and their correct filling in the BIREG system:

1. In case of transportation from EU member state to EU member state: if non-EU vehicles are used (Ukrainian, Turkish, Russian etc.) check the third country permit issued by the National Transportation Authority or the CEMT permit.
2. In case of transportation from EU to non-EU countries:

2.1. If a vehicle with a Hungarian registration number is used, check the transporter licence issued by the destination country/or the CEMT permit.

2.2. If the registration number of the vehicle used is not Hungarian:

2.2.1. **if EU vehicles are used:** check the third country permit issued by the National Transportation Authority/or the CEMT permit.

2.2.2. **if non-EU vehicles are used** (Ukrainian, Turkish, Russian etc.): check the third country permit issued by the National Transportation Authority or the CEMT permit.

3. In the territory of Hungary, only those trucks can deliver goods which have permits in line with Union regulations:

**In the case of cabotage transport:** Transporter Company accepts the checking BIREG registration of the carriage.

- Driver must show the above-mentioned document at the loading/unloading point.
- We have to refuse the loading of the truck in case of an inadequate permit (or its absence). During both the loading and unloading process, the loader (in the latter case, the recipient) must report inadequacies to authorities (traffic, customs or police), which are authorised to appear and take action.
- During loading the location and exact time, the odometer of the transport vehicle must be indicated on the permit. The loader must attach a copy of the completed permit to their copy of the delivery note and keep it for one year.
- Violation of the obligations listed above can cause a penalty by authorities.

**Please call your subcontractor's and your driver's attention to the existence of the documents and their application in the BIREG system.**